

BUILDING A SMARTER, STRONGER AND CLEANER ENERGY GRID FOR SALEM COUNTY



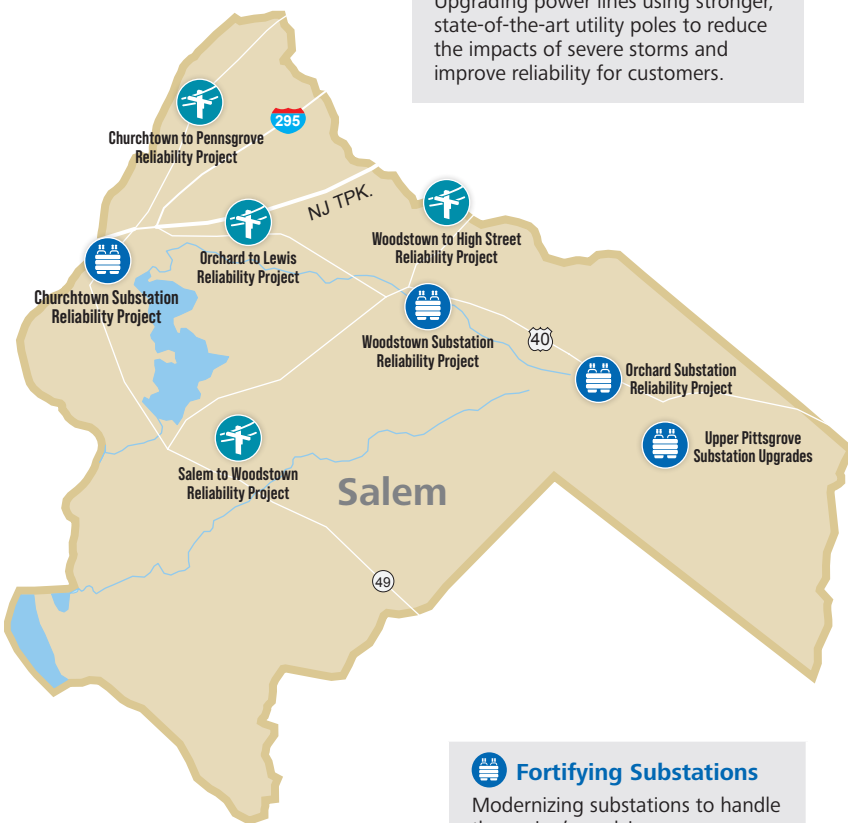
An Exelon Company

We are modernizing and strengthening the local energy grid to make it more resilient against the growing threats of extreme weather, reduce the frequency and duration of power outages and improve energy service for local customers. Here are several examples in your community.

CRITICAL RELIABILITY PROJECTS

Strengthening Power Lines

Upgrading power lines using stronger, state-of-the-art utility poles to reduce the impacts of severe storms and improve reliability for customers.



Fortifying Substations

Modernizing substations to handle the region's evolving energy needs and more extreme weather, creating a more reliable and resilient connection between the regional transmission system and the local energy grid.

STRONGER

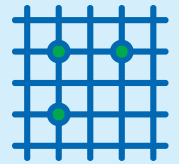
Salem County customers continue to experience improvements in the reliability of their energy service because of our ongoing efforts to modernize the local energy grid.



- Reduced power outages by **27 percent** in Salem County over the last five years
- Upgraded **38 miles** of power lines in Salem County over the past few years
- Trimmed trees along **770 miles** of distribution lines to help reduce outages over the last several years

SMARTER

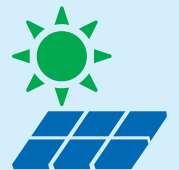
Innovative technologies improve system reliability and service for our customers in Salem County. This specialized equipment can automatically restore service more quickly or isolate damage.



- Installed more than **100 automated devices** over the past 3 years

CLEANER

We are bringing the benefits of renewable energy to our Salem County customers.



- Connected nearly **180 new solar customers** to the local energy grid in 2019 and 2020
- More than **2,020 total solar customers** in Salem County